



# 100kW – 200kW Rental Package



## Features

### Cummins® Power Generation Sets

- Cummins engines, Newage Alternators and PowerCommand Controls - Designed, built, certified prototype tested and warranted by the only company that controls the process from start to finish.
- Supported exclusively worldwide by your Cummins Distributors.
- Utilize proven standard generator set designs.
- Includes jacket water heaters for more reliable operation in emergency standby applications.

### Cummins Diesel Engines

- Rugged 4-cycle industrial diesel engines with excellent transient performance.
- Certified to US EPA Mobile Off Highway Standards.
- Lightweight, compact and excellent fuel economy.

### Newage® Alternators

- Designed and built by Cummins Power Generation.
- Oversized alternators for improved motor starting and low temperature rise in prime and continuous applications.
- Permanent Magnet excitation for improved performance in cyclic and non-linear load applications.
- 12-lead reconnectable alternator fitted with a voltage selection switch (277/480V3Ph, 120/208V3P, 120/240V1Ph)

### PowerCommand® Controls

- The most advanced, reliable and capable generator set control system available in the market today.
- Integrated generator set governing, voltage regulation, and protection in one easy-to-operate customer interface.

## **Cummins Cooling System**

- Optimized for maximum efficiency and minimum noise.

## **Sound Attenuated Housings**

- Weather Protective design with excellent sound attenuation characteristics
- Oil and water resistant fiberglass acoustical material
- Integral mounted critical-grade exhaust silencer
- Exhaust raincap and rainshield
- Key lockable door handles
- Padlockable door latches for added security
- Stainless steel hinges for greater corrosion resistance
- Multiple stage advanced sound attenuation design
- Weather protective access door seals
- 12 & 14 gauge cold rolled steel construction
- Plated non-marring fasteners

## **Generator Trailers**

- Custom-made to fit Cummins Power Generation gensets from 60kW-200kW.
- Built-in fuel tank and rupture basin
- Front and rear swivel jacks
- Electric brakes and safety breakaway
- Maintenance free tandem axles with independent suspension

## Ratings Definitions

<b>Standby:</b>	<b>Prime (Unlimited Running Time):</b>	<b>Base Load (Continuous):</b>
Applicable for supplying emergency power for the duration of normal power interruption. No sustained overload capability is available for this rating. Nominally rated. (Equivalent to Fuel Stop Power in accordance with ISO3046, AS2789, DIN6271, and BS5514.)	Applicable for supplying power in lieu of commercially purchased power. Prime power is the maximum power available at a variable load for an unlimited number of hours. A 10% overload capability is available for limited time. Nominally rated. (Equivalent to Prime Power in accordance with ISO8528 and Overload Power in accordance with ISO3046, AS2789, DIN6271, and BS5514.)	Applicable for supplying power continuously to a load for this rating. Nominally rated. Consult authorized distributor for rating. (Equivalent to Continuous Power in accordance with ISO8528, ISO3046, AS2789, DIN6271, and BS5514.)



Optional Features Shown

### PowerCommand® Control with AmpSentry™ Protection

- Integrated automatic voltage regulator and engine speed governor
- AmpSentry Protection guards the electrical integrity of the alternator and power system from the effects of overcurrent, over/under voltage, under frequency and overload conditions
- Control components designed to withstand the vibration levels typical in generator sets

#### Standard Control Description

- |   |  |
|---|--|
| <ul style="list-style-type: none"> <li>• Analog % of current meter (amps)</li> <li>• Analog AC frequency meter</li> <li>• Analog AC voltage meter</li> <li>• Analog % of load meter (kW)</li> <li>• Cycle cranking control</li> <li>• Digital display panel</li> <li>• Emergency stop switch</li> <li>• Idle mode control</li> <li>• Menu switch</li> </ul> | <ul style="list-style-type: none"> <li>• Panel backlighting</li> <li>• Remote starting, 12 volt, 2 wire</li> <li>• Reset switch</li> <li>• Run-Off-Auto switch</li> <li>• Sealed front panel, gasketed door</li> <li>• Self diagnostics</li> <li>• Separate customer interconnection box</li> <li>• Voltmeter/Ammeter phase selector switch</li> </ul> |
|---|--|

### Standard Protection Functions

#### Warnings

- High Coolant Temperature
- High DC Voltage
- Low Coolant Temperature
- Low DC Voltage
- Low Oil Pressure
- Over Current
- Oil Pressure Sender Fault
- Overload Load Shed Contacts
- Temperature Sender Fault
- Up to Four Customer Fault Inputs
- Weak Battery

#### Shutdowns

- Emergency Stop
- Fail to Crank
- High AC Voltage
- High Coolant Temperature
- Low Coolant Level (option for alarm only)
- Low AC Voltage
- Low Oil Pressure
- Magnetic Pickup Failure
- Overcrank
- Overcurrent
- Overspeed
- Short Circuit
- Underfrequency

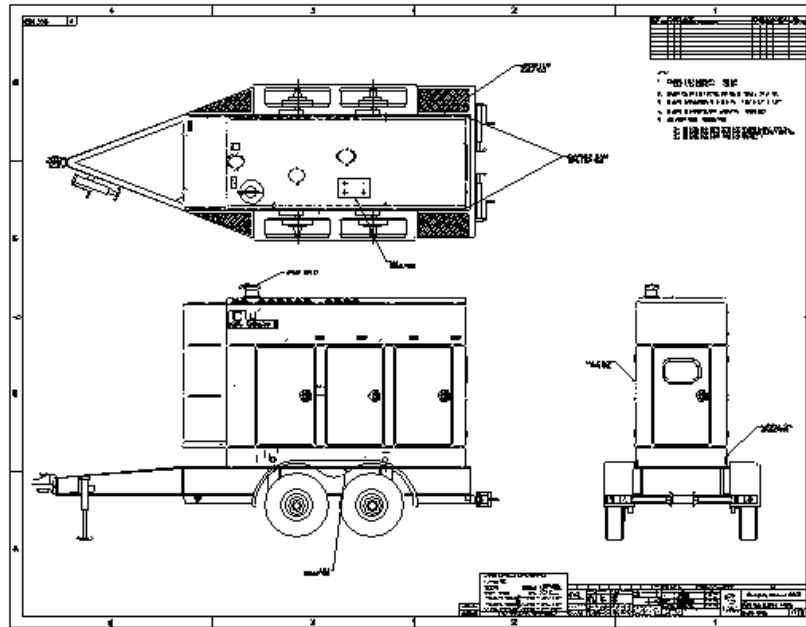
### Standard Performance Data

#### AC Alternator Data

- Current by Phase
- Kilowatts
- Kilowatt Hours
- Power Factor
- Voltage Line to Line
- Voltage Line to Neutral

#### Engine Data

- Battery Voltage
- Coolant Temperature
- Engine Running Hours
- Engine Starts Counter
- Oil Pressure
- Oil Temperature
- RPM



Model	Length		Width		Height		Weight (w/o Fuel)		Weight (with Fuel)		Fuel Capacity	
	in	mm	in	mm	in	mm	lbs	kg	lbs	kg	US Gal	liters
<b>DGDB</b>	179	4547	68	1727	108	2743	6850	3107	7915	3590	150	568
<b>DGFA</b>	198	5029	68	1727	108	2743	7800	3538	8936	4053	160	606
<b>DGFC</b>	198	5029	68	1727	108	2743	7850	3561	8986	4076	160	606

Model	kW Rating		Cummins Engine Model	Sound Level dBa @7m	Generator Specification Sheet #	Hours of Operation (75% Load)	
	Standby	Prime				Standby	Prime
<b>DGDB</b>	100	90	6BT5.9-G6	70	S-1121 50Hz S-1122 60Hz	26	28
<b>DGFA</b>	150	135	6CTA8.3-G	72	S-1125 50Hz S-1126 60Hz	19	21
<b>DGFC</b>	200	180	6CTAA8.3-GI	74	S-1130 50Hz S-1131 60Hz	15	16



**Cummins Power Generation**  
 1400 73rd Avenue N.E.  
 Minneapolis, MN 55432  
 1-877-POWR-NOW (877-769-7669)  
 Fax: 612-574-8087



**See your distributor for more information.**

Backfeed to a utility system can cause electrocution and/or property damage. Do not connect to any building's electrical system except through an approved device or after building main switch is opened.

Cummins is a registered trademark of Cummins Engine Company. Power Rent is a service mark of Cummins Engine Company. PowerCommand is a trademark of Onan